



Specifications/Installation HI-100 Humidity Indicator

General Information

The HI-100 Humidity Indicator utilizes a remote humidity sensor to provide accurate panel mount humidity indication. Application examples include computer rooms, industrial process, food holding systems, agriculture, etc.

Features

0.56" high LED display
Panel mount enclosure
Snap-in mounting
Sensor not included

Available Sensors(not included)

HS-50-S, space
HS-70-O, outdoor
HS-200-D, duct

Specifications:

Power requirements: 12 or 24 Vac, 12 or 24 Vdc input, 2VA

Range: 10 to 100% RH

Operating ambient temperature range: 20° to 140°F

Accuracy: \pm 2-3% between the range of 10% and 90% RH

Sensor(not included): 36" long four conductor 26 AWG, can be extended up to 1000'

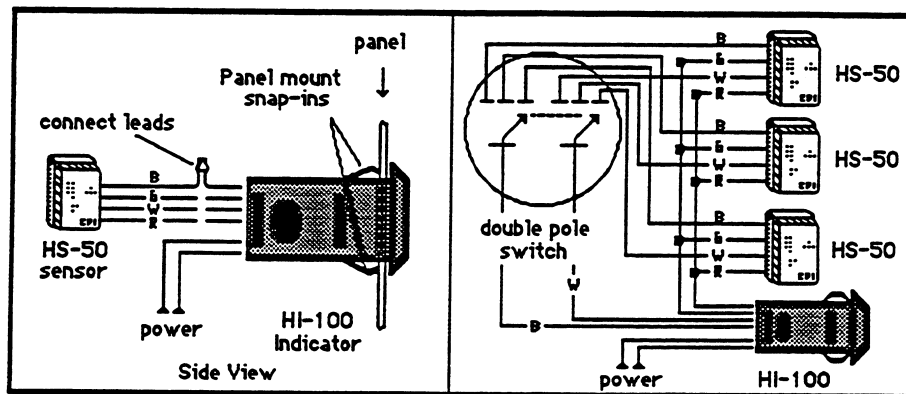
Case dimensions: 2.95" wide x 1.325" high x 2.2" deep, bezel is 0.125" larger than cutout

Warning: Chemicals such as chlorine, ammonia, alcohol and strong salts may damage sensor.

Modifications-Modifications(voltage, ranges, sensor length, etc.) are available upon request.

IMPORTANT!

Installation must be performed by trained service personnel, and in accordance with local codes, ordinances, regulations and instructions. **Warning: Improper installation could result in a hazardous condition. DO NOT GROUND OR SHORT VOLTAGE OR SENSOR LEADS.**



Installation with one sensor

Installation with multiple sensors

Warranty-Control Products, Inc. warrants its products to be free from defects in material or workmanship under normal use for one year, and is not responsible for consequent damages or installation costs of any nature.

3/1/90